



CITY & GUILDS LEVEL 2 AWARD IN WORKING IN MEDIUM RISK CONFINED SPACES (6160-02)



Aims & Objectives

This City & Guilds course is designed to equip delegates with the essential skills to work safely in medium-risk confined spaces. It covers entry into NC2, and NC3 category confined spaces, ensuring comprehensive training for varied operational environments.

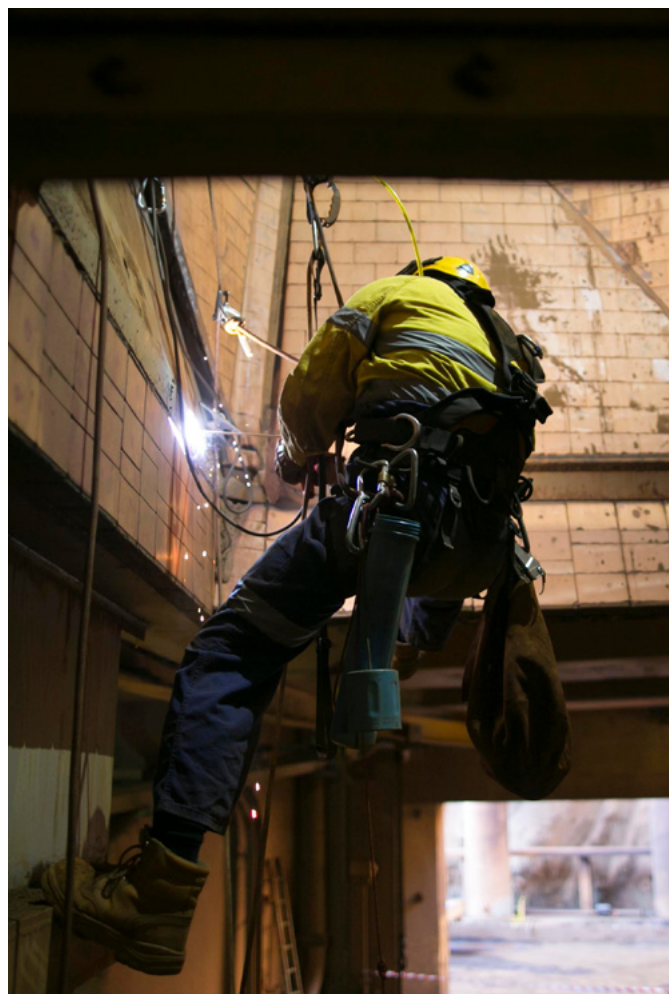


Get in touch:

T. 0800 059 0505

E. info@triton-riskmanagement.com

triton-riskmanagement.com



Course Agenda

The course blends classroom-based tutorials with practical assignments, culminating in both theoretical and practical assessments. The detailed agenda includes:

Preparation for Safe Work in Medium-Risk Confined Spaces: Check all equipment, obtain authorisation, maintain safety zones and adequate communication.

Safe Entry and Exit Procedures: Test and record results of monitoring equipment, carry out safety inspection and identify unsafe activity.

Safely use all Tools and Equipment: Check all equipment, tools and PPE are safe and suitable. Carry out after use checks.

Work Safety and Team Monitoring: Select suitable communication method and follow safe working procedures.

Emergency Management: Procedures for dealing with emergencies in confined spaces such as initiating emergency exit, recording and reporting.

Understand the principles: Identify the main principles of health and safety, environmental legislation, regulations and guidance.



Get in touch:

T. 0800 059 0505

E. info@triton-riskmanagement.com

triton-riskmanagement.com



✔ Course Duration and Requirements

This two-day course is ideal for individuals working or preparing to work in medium-risk confined spaces. It covers essential safety preparations, safe entry and exit practices, correct use of equipment and tools, adherence to protocols, and emergency response procedures.

Prerequisites:

Participants must meet the following criteria:

Minimum age of 18

Medically fit to wear a breathing apparatus and enter confined spaces (proof required).

No conditions affecting eyesight or hearing, heart disease, high blood pressure, epilepsy, fear of heights or confined spaces, vertigo, balance issues, impaired limb function, alcohol or drug dependence, or psychiatric illness.

Enrolment Requirements:

Due to the critical nature of confined space work and the emphasis on communication, assessments are conducted in English, with no provision for interpreters. Delegates must inform the training team in advance if training on a "Mask Style Escape Set (PP10/PP15)" is required, as standard training uses the Hooded Style Escape Set (CF10/CF15).



Certification

The Level 2 Award in Working in Medium Risk Confined Spaces (6160-02) certificate will be issued post-audit.



Get in touch:

T. 0800 059 0505
E. info@triton-riskmanagement.com